

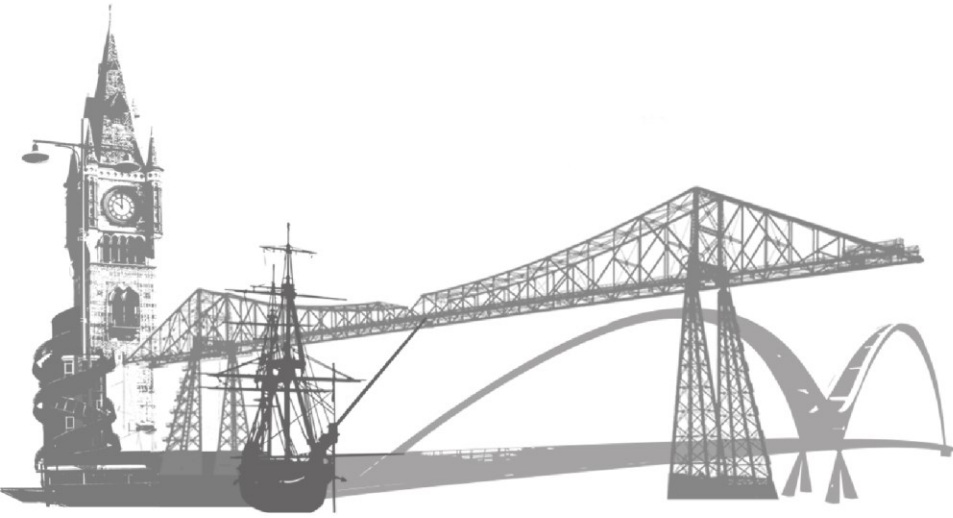


TEES VALLEY  
COMBINED  
AUTHORITY

TEES VALLEY MAYOR

# Strategic Transport Plan

---



# Challenges & opportunities

---

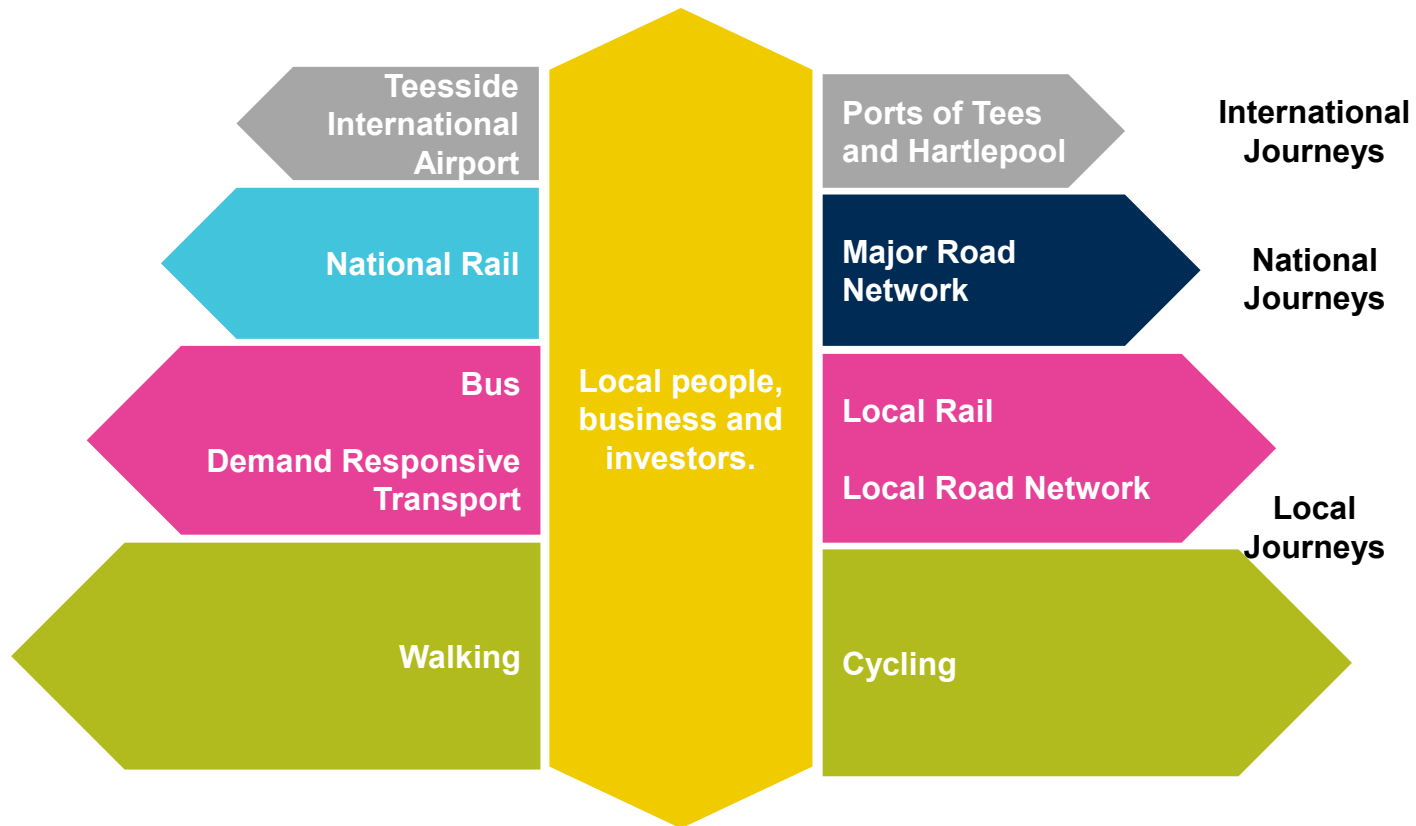
- 31% of households have no car (25% nationally)
- 87% of Tees Valley residents work within Tees Valley – 73% of these travel by car
- Over 28m bus journeys in 2017/18 – but a 13% decrease since 2012/13
- Over 6.5m rail boardings & alightings in 2017/18 – a 10% increase since 2010
- Cycling makes up just 2.1% of travel to work trips and walking 11%
- Teesport – 7<sup>th</sup> largest UK port in terms of total tonnage (29m tonnes in 2018)

# Key principles

---

- Transport is about moving people or goods
  - We need to provide high quality and affordable choice
- Need to think of transport as a system
  - different transport modes need to be integrated
  - What happens on the strategic network very often impacts the local network
- Transport is a means to an end – accessing education, employment, culture etc.

# Different types of journey



# Proposed Vision

---

*“To provide a high quality, clean, quick, affordable, reliable, integrated and safe transport network for people and freight to move within, to and from the Tees Valley”*

# Objectives and Outcomes

## Social Opportunity

Improving access to employment, skills, training and education

Improving access to healthcare, leisure, culture and retail

Enhancing health and wellbeing

Improving community safety and security

## Economic Growth

Supporting the development of 22,000 new homes

Supporting the creation of 25,000 new jobs

Improving productivity through enhanced freight connectivity

Providing quicker, more reliable journeys

## Environmental Protection and Enhancement

Improving air quality

Reducing carbon emissions

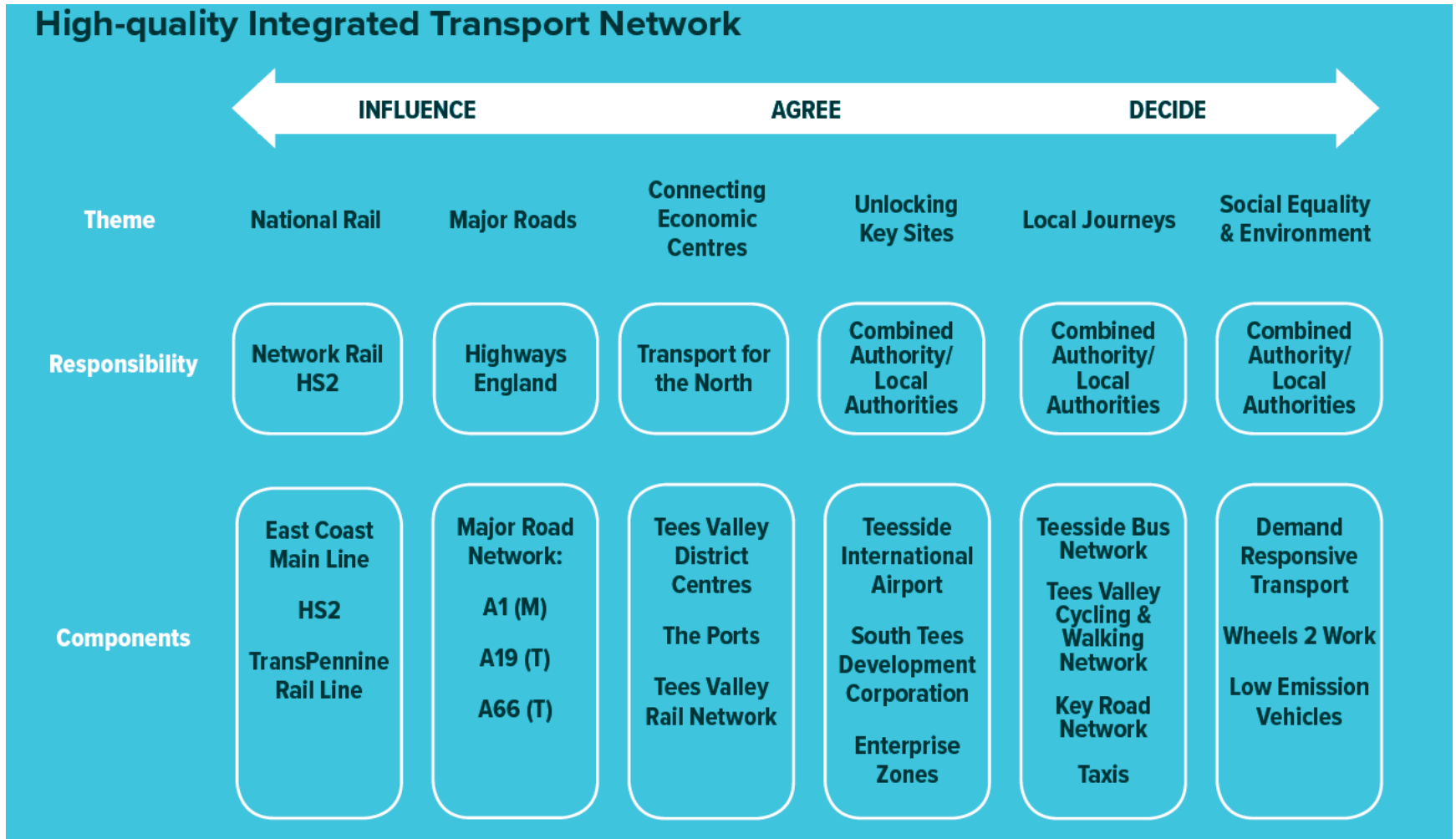
Enhancing and protecting the natural and built environment

# Structure of the plan

---

- **Why** is investment in our transport network needed? This sets out why transport investment is fundamental to the future of Tees Valley.
- **What** is proposed? This summarises the schemes and initiatives that will help achieve the vision.
- **How** will the vision of the Strategic Transport Plan be achieved? This sets out how the plan will be delivered and funded and how we will work with delivery partners such as Highways England and Network Rail

# Themes

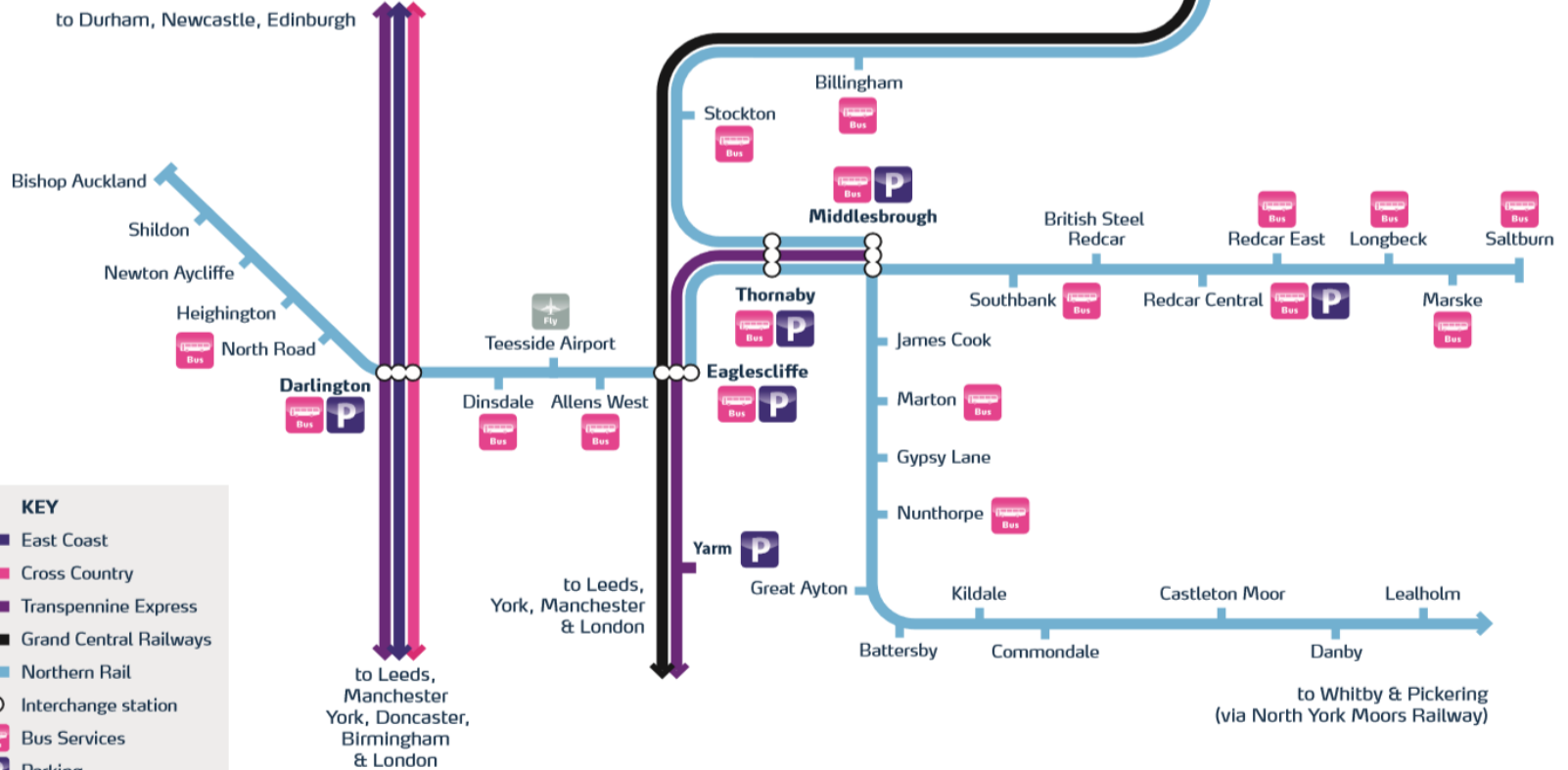




# Rail network



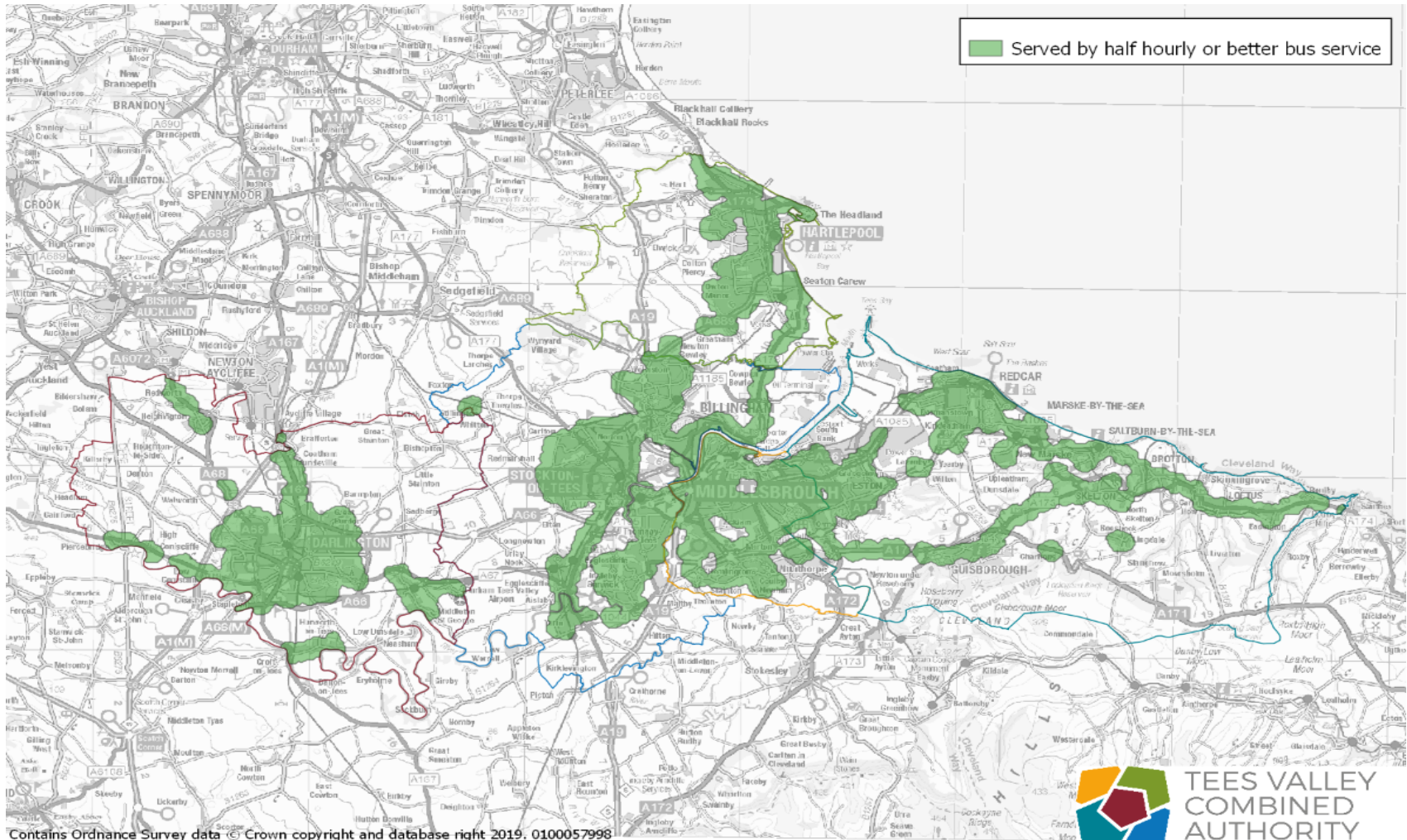
[www.connectteesvalley.com](http://www.connectteesvalley.com)



**KEY**

- East Coast
- Cross Country
- Transpennine Express
- Grand Central Railways
- Northern Rail
- Interchange station
- Bus Services
- P Parking

# Bus Network Coverage



# What does this mean for local people?

---

Our ambition is that :

- They will be able to **access the new jobs** we are creating across the Tees Valley
- The quality and reliability of their **daily commute** will be improved
- They will be able to rely on the **latest technology** to make travelling around as easy as possible
- **Air quality** will improve, with reduced carbon emissions
- More reliable, affordable **public transport, walking and cycling** options will be created so people can get to work, study, get to a hospital, go shopping etc.
- There will be additional routes and improved access to our international **airport** via public transport
- Business productivity will be improved thanks to enhanced **freight connectivity**
- Visitors and residents to the area will find it easy to visit our **cultural events and destinations**

# Some highlights (Darlington)

---

- Darlington Station
- Darlington Northern Link Road & wider connectivity along the A66
- A19 Tees Crossing – capacity enhancement scheme
- Demand Responsive Transport pilot
- Cycling and walking infrastructure
- Wheels to Work
- Electric vehicle charging infrastructure
- Bus partnership
- Bus improvement corridors

# Process

---

- Cabinet on 26 July 2019 – approval to consult
- 28 August to 20 November 2019 – public consultation including an event in each local authority
- January 2020 – Cabinet approval of final version
- February 2020 – plan published

# Consultation events

---

- Monday 9<sup>th</sup> September 2019 10am-2pm – Darlington town centre: Cornmill Shopping Centre
- Wednesday 11<sup>th</sup> September 2019 10am-2pm – Stockton town centre: Castlegate Centre
- Thursday 12<sup>th</sup> September 2019 10am-2pm – Hartlepool town centre: Middleton Grange Shopping Centre
- Saturday 14<sup>th</sup> September 2019 10am-2pm – Middlesbrough town centre: Hill Street Centre
- Saturday 14<sup>th</sup> September 2019 3pm-7pm – Asda Skelton, Redcar and Cleveland
- Sunday 15<sup>th</sup> September 2019 10am-2pm – Kirkleatham: Festival of Thrift

# Budget

---

- **The Integrated Transport Programme is a total of £257m – £181.5m is confirmed and £75.5m is forecast based on the continuation of transport funding beyond 2023/24 up to 2028/29**
- **Of the £181.5m, £119m has already been approved by Cabinet** (Middlesbrough Station, Darlington Station, Teesside International Airport & A19, grade separated junction, Elwick bypass and Hartlepool Western Link)
- **The remaining £66.5m is being presented to Cabinet for approval in Jan 2020**
- **We need to secure additional funding from the DfT to deliver our major schemes**



TEES VALLEY  
COMBINED  
AUTHORITY

| **TEES VALLEY MAYOR**

Cavendish House, Teesdale Business Park,

Stockton-on-Tees, Tees Valley, TS17 6QY

Switchboard: 01642 524400

[www.teesvalley-ca.gov.uk](http://www.teesvalley-ca.gov.uk)



TeesValleyCA